

A Canon Celesteion PET/CT scanner is shown from a side profile. The machine is white with a large circular gantry on the left. A patient bed is extended from the gantry towards the right. The word "Celesteion" is printed in blue on the side of the gantry. On the right side of the gantry, there is a control panel with a red indicator light and a keypad with several buttons labeled with letters and numbers. The background is a plain, light-colored wall.

**Canon**

Celesteion

***Celesteion***

PUREViSION Edition PET/CT

Expanding Workflow  
and Image Quality

# The Power to Scan

## For a More Confident Diagnosis

Canon's unique PET/CT system just got even better. Known for the industry's largest 90cm CT bore and 70 cm True Field of View (FOV), Celesteion now offers advanced upgrades that once again focus on comfort, safety, and precision.

Whether added onto an existing system or a brand new machine, cutting-edge enhancements give clinicians the power to scan in new and unique ways that could:

- Improve image quality
- Reduce dose
- Increase accuracy
- Improve workflow

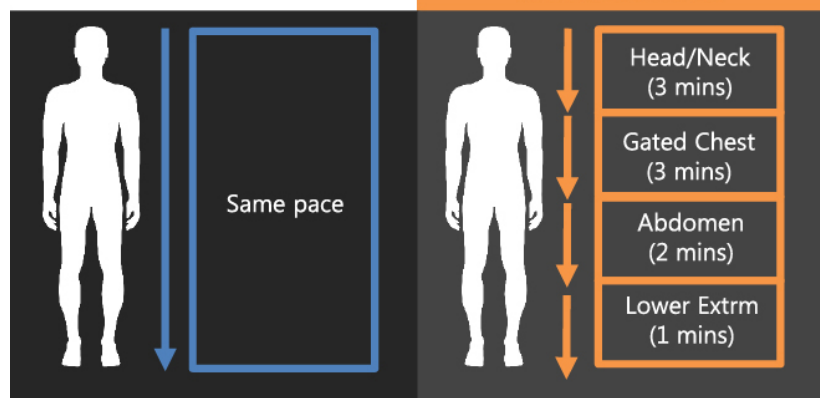
Take scanning to the next level with Canon Medical Systems.

## The Enhancements

### **Variable Bed Time (vBT)**

#### ***Speed Up Scan Times***

Unnecessary time on the scan bed can result in patient discomfort and longer than needed scan times. vBT allows users to quickly adjust scan times and acquisition mode to anatomical and clinical need per bed positions.



### **PET Respiratory Gating**

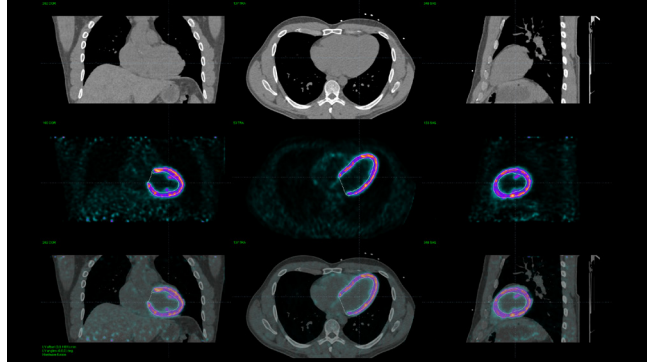
#### ***Boost Efficiency***

Accurately tracking tumor position in regions where breathing causes motion can be complicated. With PET Respiratory Gating on a whole body scan, a patient's breathing cycle can be tracked with more speed and efficiency — which could translate into more accurate exams, better patient experience, and improved workflow.

## PET ECG Gating

### Image the Heart in Motion

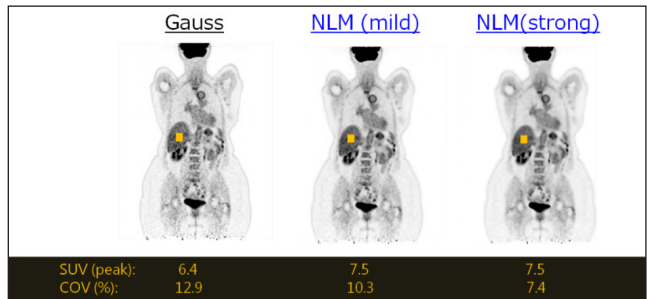
New expanded options on Celesteion include the ability to acquire gated PET images. Gated scan will allow physician to obtain and view cardiac PET and fused CT images in motion.



## Clear Adaptive Low-noise Method (CaLM) + PSF

### Increase Clarity

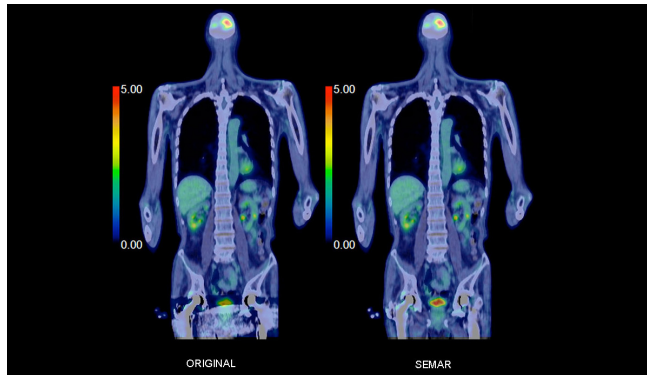
Noise and spatial resolution limitation of PET scans can make it difficult to identify small lesions. Used with Point Spread Function (PSF) CaLM filters out noise, providing greater clarity and less loss of detail for better image quality.



## Single Energy Metal Artifact Reduction (SEMAR)

### Diagnose with Confidence

Metal artifacts can complicate the scanning process. Now standard on Canon CT systems, SEMAR for PET/CT uses a reconstruction technique to reduce metallic artifact, improving visualization of implants and supporting bone and adjacent soft tissues for a clearer image and more confident diagnosis.



# By the Numbers

Celesteion delivers a level of access so clinicians and staff can position patients more easily — and patients can experience more comfort and ease. The machine's design takes the guesswork out of imaging, featuring:

**90 cm**

CT bore

**88 cm**

PET bore

**70 cm**

True PET and CT field of view

Follow us: <https://us.medical.canon>



@CanonMedicalUS



+CanonMedicalUS



Canon Medical Systems USA, Inc.



+CanonMedicalUS

**Canon**

CANON MEDICAL SYSTEMS USA, INC.

<https://us.medical.canon>

2441 Michelle Drive, Tustin CA 92780 | 800.421.1968

©Canon Medical Systems, USA 2018. All rights reserved.  
Design and specifications subject to change without notice.

Aquilion, Aquilion Precision, Aquilion ONE VISION, Aquilion ONE GENESIS, Aquilion Lightning, Celesteion, Infinix, Aplio, Vantage Titan, Vantage Galan, <sup>SURE</sup>Subtraction and Made for Life are trademarks of Canon Medical Systems Corporation. Google+ logo and YouTube logo are trademarks of Google Inc. TWITTER, TWEET, RETWEET and the Twitter logo are trademarks of Twitter, Inc. or its affiliates. LinkedIn, the LinkedIn logo, the IN logo and InMail are registered trademarks or trademarks of LinkedIn Corporation and its affiliates in the United States and/or other countries.

CTBR13072US

*Made For life*